

# Discovery Work Sheets

## REO PUZZLES ONLINE

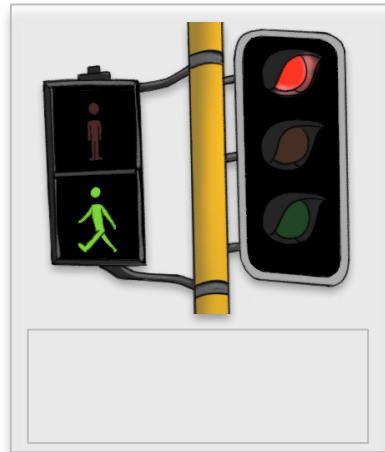
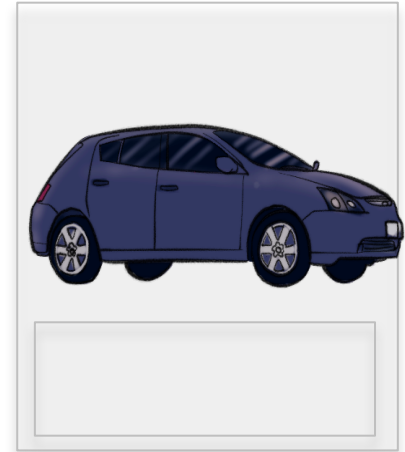
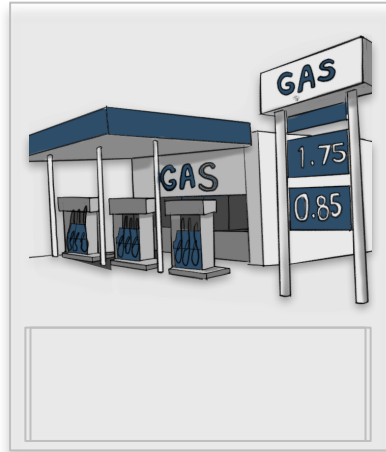


These worksheets have been developed by schools/ kura and whānau for extension activities. Please send your resources or ideas to [info@kiwadigital.com](mailto:info@kiwadigital.com) so we can share.

# KE TE HUARAHI / ON THE ROAD

You will HEAR many sounds on a road trip in Aotearoa.

- 1) Make the noises each item makes (record this if you can)
- 2) Find out how to say each item in te Reo Māori



# WHAKAKĀKAHURIA TE TUATARA! / DRESS THE TUATARA

- 1) Color in the tuatara.
- 2) Draw 3 things he can play with



## KIA TAURITE / HAIRY MACLARY MATCHING PAIRS

- 1) Draw your favourite character in the puzzle.
- 2) Record yourself saying these rhymes.

Bitzer Maloney all skinny and bony  
Bitzer Maloney, tūai, whīrokiroki

Bottomley Potts covered in spots  
Bottomley Potts noa, kōiraira katoa

Hairy Maclary from Donaldson's dairy  
Hairy Maclary nō te Tēri a Tānarahana

Hercules Morse as big as a horse  
Hercules Morse kātahi he hōiho tonu te rahi

Muffin McLay, like a bundle of hay  
Muffin McLay, ānō he kāpuinga hei

Scarface Claw the toughest tom in town  
Ko matatīhore matikara,  
tame whakamataku o te tāone katoa

Schnitzel von Krumm with a very low tum  
Schnitzel von Kumu, pāpaku te puku





## **KEI TAE TŌMURI KI TE KURA / I'M LATE FOR SCHOOL!**

Eru is a young Māori boy who plays video games - a lot! In this story he is late for school.

- 1) Name one thing Eru needs to find in the morning.
- 2) Name one thing Eru needs to eat or drink in the morning.
- 3) Write about one time you have been late. What happened?



# HE KŌRERO TUKU IHO

*Kaitiakitanga* means we have the responsibility to guard natural resources as *taonga* or treasures.

- 1) Draw a picture of your favorite natural place e.g. a beach, a lake, a park, a mountain.
- 2) What makes it special, or a treasure?



# KI TE MĀRA / IN THE GARDEN

We are cooking dinner!

- 1) Circle ONLY the items that you could grow in a garden.
- 2) Name these in English and te Reo Māori.
- 3) Draw what they look like in the garden.

